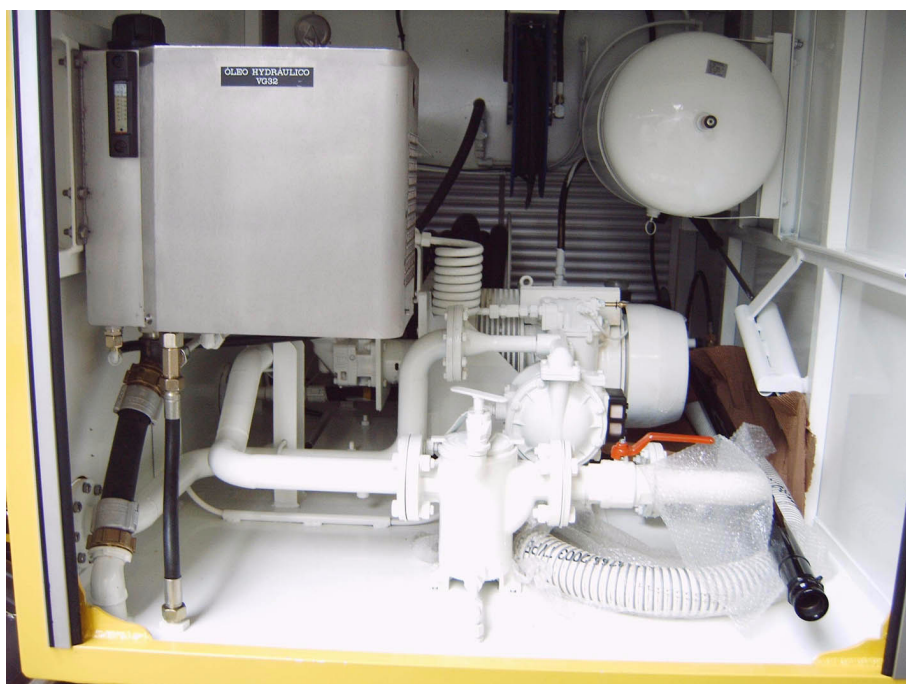




PIT CLEANER 1.000L



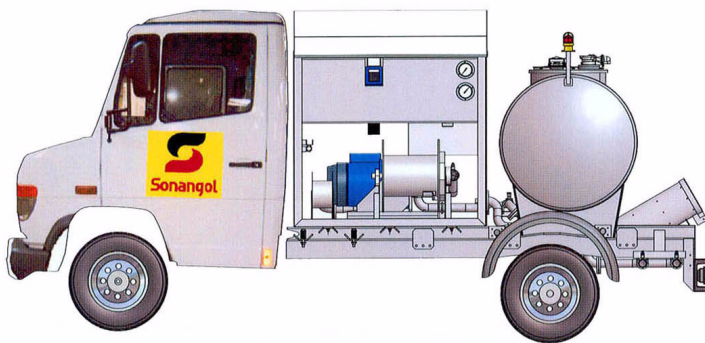
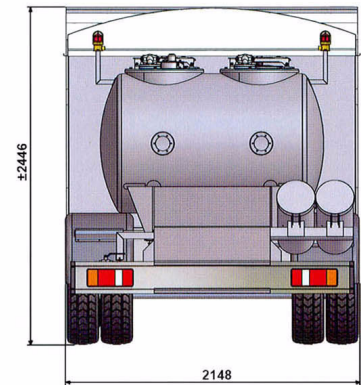
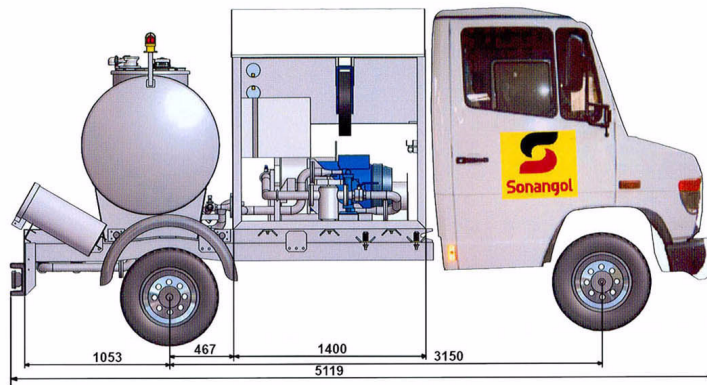
Atcomex Company nv

Nijverheidslaan 6
B-8560 Gullegem
Belgium
Tel. 32 56 43 99 20
Fax. 32 56 40 00 56
Email: atc.gullegem@atcomex.be
BTW/TVA BE 0425 920 763
RPR/RPM KORTRIJK

Atrefco nv Atcomex Hamme

Industriepark Zwaarveld 11
B-9220 Hamme
Belgium
Tel. 32 52 49 92 90
Fax. 32 52 47 84 32
Email: info.hamme@atcomex.be
BTW/TVA BE 0433 655 920
RPR/RPM DENDERMONDE

www.atcomex.be



TECHNICAL SPECIFICATIONS

- Tractor unit Mercedes Vario 614D 4x2 (other chassis makes available).
- Rigid 1000 litres capacity tank in stainless steel. Two compartments.
- Hydraulic driven air compressor and, high pressure water pump.
- Diaphragm pump with suction hose reel and suction pipe.

SAFETY FEATURES

- High level shut off when waste tank is full.
- Wired to ADR standard.

OTHER TANK CAPACITY AVAILABLE IN COMBINATION WITH OTHER CHASSIS.