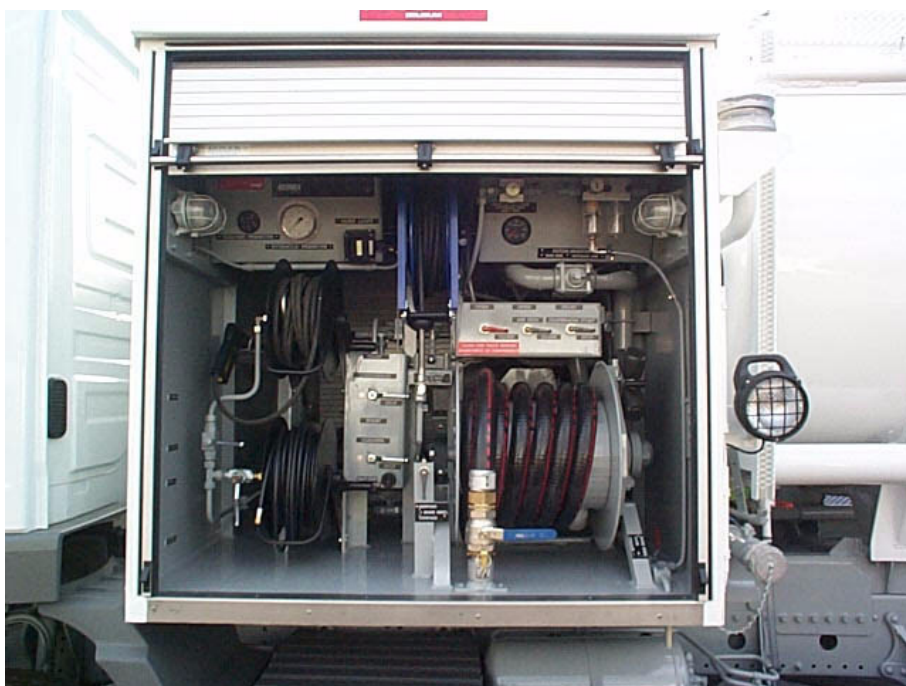




## PIT CLEANER 5.000L



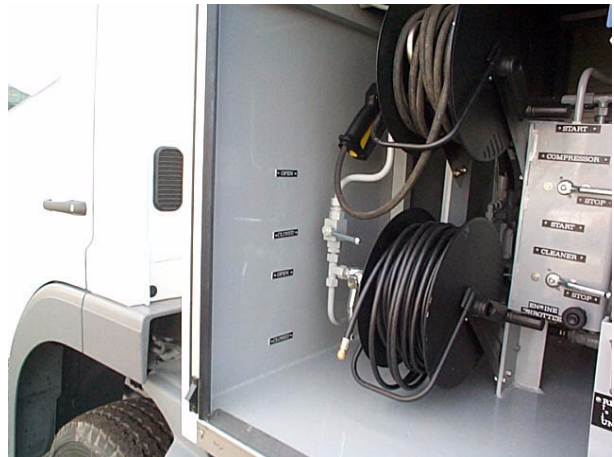
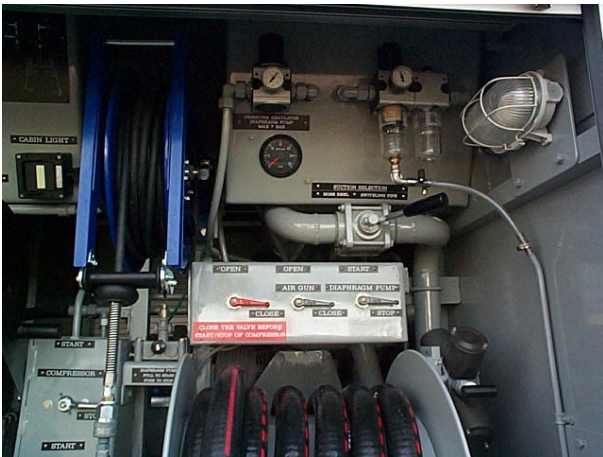
### Atcomex Company nv

Nijverheidslaan 6  
B-8560 Gullegem  
Belgium  
Tel. 32 56 43 99 20  
Fax. 32 56 40 00 56  
Email: [atc.gullegem@atcomex.be](mailto:atc.gullegem@atcomex.be)  
BTW/TVA BE 0425 920 763  
RPR/RPM KORTRIJK

### Atrefco nv Atcomex Hamme

Industriepark Zwaarveld 11  
B-9220 Hamme  
Belgium  
Tel. 32 52 49 92 90  
Fax. 32 52 47 84 32  
Email: [info.hamme@atcomex.be](mailto:info.hamme@atcomex.be)  
BTW/TVA BE 0433 655 920  
RPR/RPM DENDERMONDE

[www.atcomex.be](http://www.atcomex.be)



## **TECHNICAL SPECIFICATIONS**

- Tractor unit Mercedes Atego 1317 4x2 (other chassis makes available).
- Rigid 5000 litres capacity tank in stainless steel. Two compartments.
- Hydraulic driven air compressor and, high pressure water pump.
- Diaphragm pump with suction hose reel and suction pipe.

## **SAFETY FEATURES**

- High level shut off when waste tank is full.
- Wired to ADR standard.

**OTHER TANK CAPACITY AVAILABLE IN COMBINATION WITH OTHER CHASSIS.**